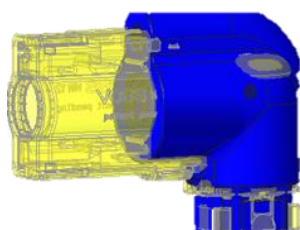


Product Bulletin

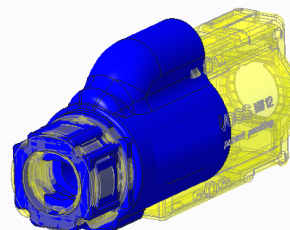
Product Bulletin	New Diesel Exhaust Fluid Lines on 9L – 18L (<560 kW) Industrials Engines
Market	Industrial, oil and gas
Engine Platforms	1706F/J/EA, 2406J/EA, 2506J/EA, 2806J/EA (<560 kW)
Engine Build Lists	All EU Stage V, U.S. EPA Tier 4 Final, and China Nonroad IV certified 9-18L engines
Details of Change	Change in diesel exhaust fluid (DEF) lines
Reason for Change	Continuous improvement
OEM Effect	Slight adjustment to space claim compared to existing DEF lines
Impact on Aftermarket	See new part numbers
Availability	June 2022
General Comments	New DEF lines will begin appearing in June 2022 and continue to be introduced for the remainder of 2022

Summary of Change

- Customers will see changes in diesel exhaust fluid (DEF) lines running from the DEF tank to the aftertreatment.
- Beginning in June 2022, the change will be rolled out and be complete by the end of 2022.
- While the change should not impact current installations, customers may notice some slight changes, some of them dimensional, in the new DEF lines.
- An outline of the changes customers may notice follows:



5/16" 90° Female Connector



5/16" STR Female Connector

Current

New

Figure 1: Overlay of current and new quick connector (SAE J2044)

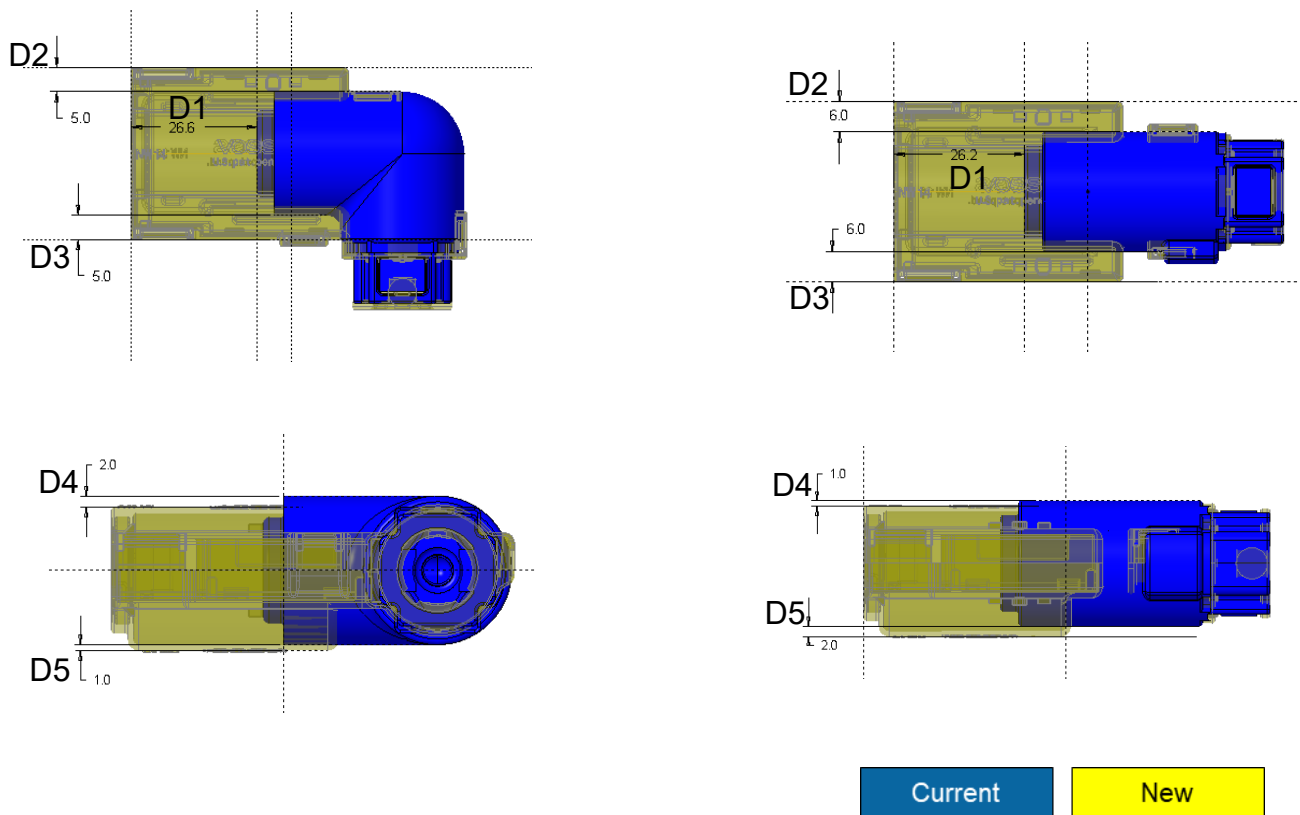


Figure 2: Quick connectors have some dimensional differences.

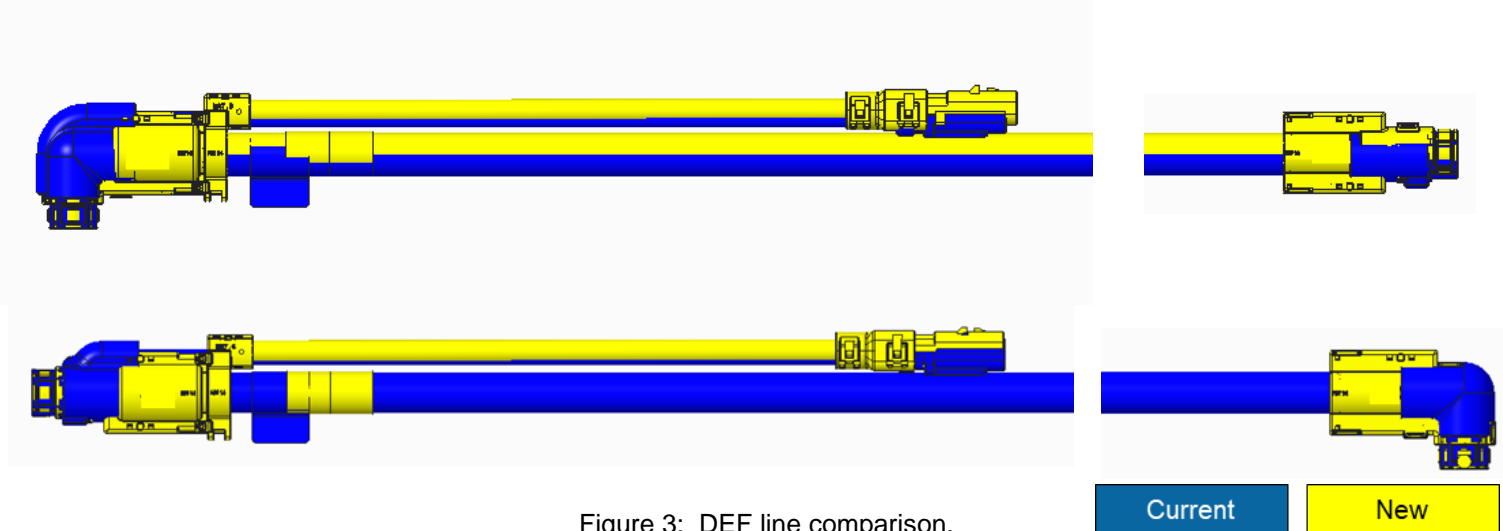


Figure 3: DEF line comparison.

Group	Group Name	Current DEF Lines		Bend Radius [mm]	New DEF Lines		Bend Radius
		Part No.	Tube OD [mm]		Part No.	Tube OD [mm]	
4198169	LINES GP-DEF	591-2472	Dia. 18.3	50	66-0194	Dia. 18.4	30
4198177		591-2473			616-0189		
4198188		578-1116			604-5361		
4198190		578-1117			616-0208		
4198189		578-1118			616-0201		
4198178		578-1453			616-0197		
4198180		578-1464			616-0209		
4198170		591-2474			616-0204		
4198171		578-1467			616-0210		
4198179		591-2475			616-0207		
4516169		591-2476			616-0195		

Table 1: Dimensions comparison between current and new DEF lines